

Survey Innovation Driving AMP8 Results



Five months into the AMP8 mandate, we look at how the latest trends & how Storm Geomatics delivers success.

AMP8 is attempting to deliver £12 billion in approved investment to the UK water infrastructure. This is now the last regulatory period from 2025 before the industry's Net Zero deadline of 2030. Water companies are set the challenge are they up for it? We know traditional approaches won't meet these demanding requirements. Success depends on having the right data foundation from day one.

Trend1: Precision Driven Asset Management

What's Happening Now: Water companies are moving from reactive maintenance to data driven asset management. With billions of £ at stake asset management decisions must be backed up by accurate, hyper intelligent survey data.



Storm Geomatics Solution: Our 18 plus years of specialist water-based surveying means our data is 100% relevant and not just accurate. This is because our surveyors work in water every day, so they know the significant features to pick up that inform the decision making process.

Your Benefit: Engineers and designers can make confident asset management decisions backed up by geospatial data that truly reflects how water systems behave and adapt overtime.

Trend 2: Accelerated Project Delivery Timeline

What's Happening: Amp8's ambitious scope means compressed delivery schedules. Projects potentially face intense pressure to deliver faster whilst not compromising on quality or safety.

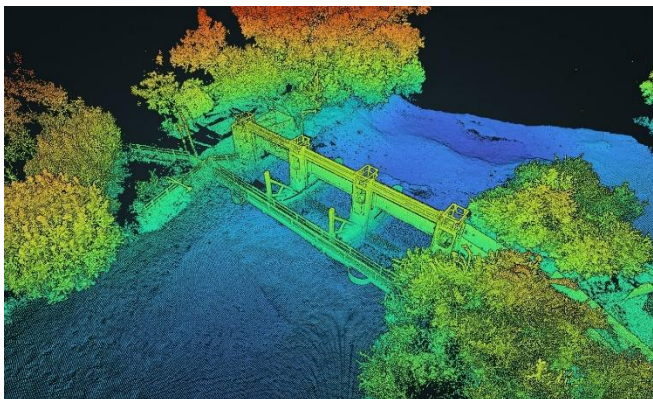


Storm Geomatics Solution: Our 18 plus years of specialist water-based surveying means our data is 100% relevant and not just accurate. This is because our surveyors work in water every day, so they know the significant features to pick up that inform the decision making process.

Your Benefit: Engineers and designers can make confident asset management decisions backed up by geospatial data that truly reflects how water systems behave and adapt overtime.

Trend 3: Value Engineering Under Financial Scrutiny

What's Happening: Every pound of £12 billion faces intense scrutiny from the public. Water companies must spend wisely and demonstrate exceptional value from their expenditure.



Storm Geomatics' Solution: Hyper intelligent survey data prevents costly design changes, construction delays and asset failures downstream. Our specialist survey expertise identifies opportunities and data capture that general topographic surveyors miss.

Your Benefit: Transform survey data from a cost centre into a value creator through better decisions. Our data will optimise the project lifecycle and de

risk investment into survey.

Trend 4: Environmental Performance and Compliance

What's Happening: Ambitious Net Zero goals set by UK Water Industry need to be considered. Biodiversity improvements and natural flood management are now core requirements and not nice-to-haves.

Storm Geomatics Solution: Sustainability and environmental improvements is at the core of everything we do at Storm Geomatics. Our river function expertise supports eco system-based asset management approaches. We have experience working on pilot schemes of natural flood management that are now real-life proof of success. Our surveyors are trained to carry our River Conditions Assessments that capture baseline habitat data that enable stakeholders to meet regulatory requirements while optimising natural capital benefits.

Moreover, we give our clients a verified carbon emission value through our ISO14064:2018 verification, in most cases this will lower their scope 3 emissions (purchased goods and services).

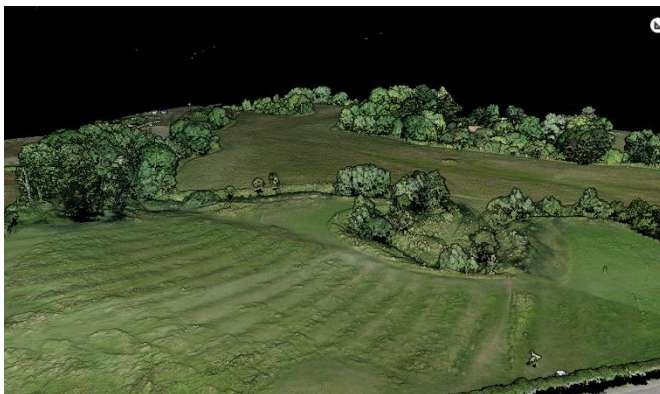


Your Benefit: Achieve environmental performance commitments while delivering traditional asset management objective: it's a win-win!

Trend 5: River Digital Twin® and Smart Infrastructure

What's Happening: Complete Digitalisation is the AMP8 mandate. Digital twin and real-time monitoring systems require accurate baseline data to deliver operational promises.

Storm Geomatics' Solution: Storm are the creator of River Digital Twin® an holistic survey approach providing the foundation to make a digital twin effective. Accurate geometry, environmental conditions and hydraulic characteristics all create real time digital models that actually work. We would love to demonstrate to you, [book your slot now.](#)



Your Benefit: River Digital Twin®s that enhance decision making and present in a way that all stake holders can understand and make informed decisions from.

Trend 6: Climate Resilience and Flood Risk Management

What's Happening: Climate change is accelerating infrastructure stress. An understanding of how water systems and their infrastructure support behaves under extreme conditions is vital for the safety of communities.



Storm Geomatics' Solution: Our topographic surveys provide the foundation of resilient infrastructure design. We capture hydraulic details that determine how systems perform under pressure of climate events.

Your benefit: Infrastructure that performs under climate stress and extremes. This will protect the asset and most importantly surrounding communities.

Why Storm Geomatics is Your AMP8 Success Partner

Proven Track Record

18 years exclusively surveying the UK's inland waterways and related infrastructure.

On time delivery commitment with weekly progress reporting

Safety first always, trained water safety for all surveyors

AMP 8 Ready

River Condition Assessment trained surveyors for environmental compliance

River and watercourse surveys for natural flood management schemes

Client focused delivery

River Digital Twin® multi sensor data in real time delivery

Dedicated project lead and weekly survey reports

Fixed prices with no surprises, early warnings provided through open communication.

AMP8 presents unprecedented opportunities but success depends on foundations and at the heart is geospatial survey data. De-risking the outcome of projects is dependent on this data to maximise the return on your investment.

If you're planning AMP8 asset management projects, let's talk about how our expertise can de-risk delivery. Our team are available by calling 01608 664910.